

SYMPHONY NO.10, 2nd Movement

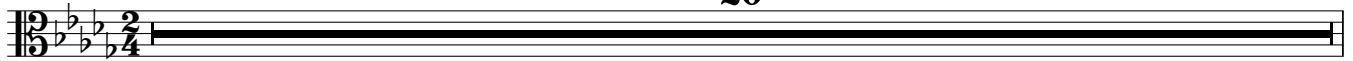
Violas (Beginner)

Dimitri SHOSTAKOVICH

Arr. Andrew J Smith

71 **Allegro** ♩ = 120

20



21

72

9

73

19



50

74

pizz.

3

6



66

75

2

2

5

76

9



87

77

2

6

78

14



111

79

arco

ff

f



118



125

80



132

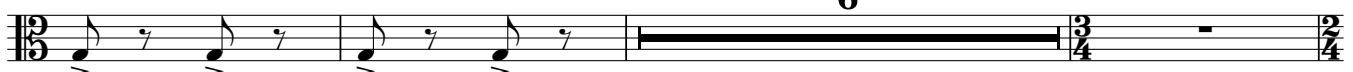
81



139

82

6



148

83



153



158

A musical staff in bass clef with a 3/4 time signature. It contains five measures of music, each with a quarter note followed by a quarter rest. Each note has an accent (>) underneath it.

163 **84**

A musical staff in bass clef with a 3/4 time signature. It contains five measures of music, each with a quarter note followed by a quarter rest. Each note has an accent (>) underneath it. The fifth measure is followed by a measure rest for 14 measures.

181

85

23

A musical staff in bass clef with a 3/4 time signature. It contains a single measure rest for 23 measures, followed by a double bar line and a key signature change to three flats (B-flat, E-flat, A-flat).

204

86

9

87

11

88

10

89

9

90

10

A musical staff in bass clef with a 3/4 time signature and a key signature of three flats. It contains five measure rests of lengths 9, 11, 10, 9, and 10 measures, separated by double bar lines.

253

91

13

92

9

93

11

94

12

95

13

A musical staff in bass clef with a 3/4 time signature and a key signature of three flats. It contains five measure rests of lengths 13, 9, 11, 12, and 13 measures, separated by double bar lines.

311

96

9

97

10

A musical staff in bass clef with a 3/4 time signature and a key signature of three flats. It contains two measure rests of lengths 9 and 10 measures, separated by a double bar line.

330

98

A musical staff in bass clef with a 3/4 time signature and a key signature of three flats. It contains six measures of music. The first five measures each have a quarter note followed by a quarter rest. The sixth measure has a quarter note followed by a quarter rest. The first measure has a forte (*ff*) dynamic marking. The staff ends with a double bar line.

336

99

2

15

A musical staff in bass clef with a 3/4 time signature and a key signature of three flats. It contains six measures of music. The first five measures each have a quarter note followed by a quarter rest. The sixth measure has a quarter note followed by a quarter rest. The first measure has a forte (*ff*) dynamic marking. The staff ends with a double bar line.