

Xylophone

# A Night On The Bare Mountain

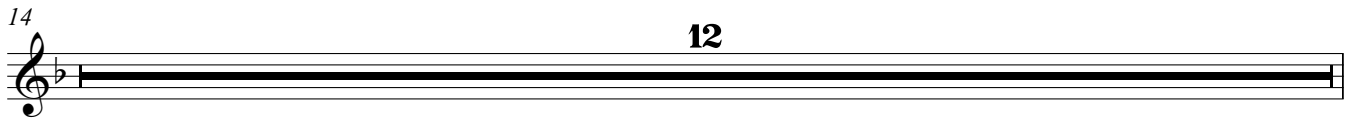
Modest MUSSORGSKY  
arr. Andrew J Smith

Fast (♩ = 192)

13



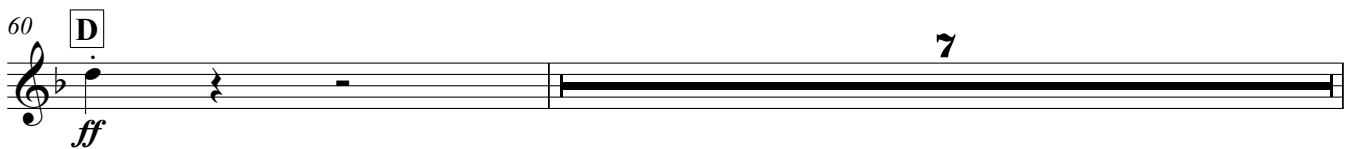
A



12



*cresc.*



7

Xylophone

68 **E** **8**

A musical staff in treble clef with a key signature of one flat (Bb). The staff contains a single horizontal line representing a whole note. Above the staff, the letter 'E' is enclosed in a box, and the number '8' is centered above the line. The staff ends with a double bar line.

76 **F** **Much slower** ♩=60 **8**

A musical staff in treble clef with a key signature of one flat (Bb). The staff contains a single horizontal line representing a whole note. Above the staff, the letter 'F' is enclosed in a box, followed by the text 'Much slower' and a quarter note with '=60' below it. The number '8' is centered above the line. The staff ends with a double bar line and a key signature change to two sharps (F# and C#).

84 **16**

A musical staff in treble clef with a key signature of two sharps (F# and C#). The staff contains a single horizontal line representing a whole note. Above the staff, the number '16' is centered above the line. The staff ends with a double bar line.