

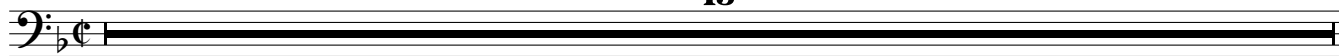
Trombones (Beginner) \*or other bass C instrument

# A Night On The Bare Mountain

Modest MUSSORGSKY  
arr. Andrew J Smith

Fast (♩ = 192)

13



14 **A**

*f* F E D E F F

20

C C C C D D D E

*ff*

26 **B**

D D D D D D D D

*f*

34

C C C C C F F E

42 **C**

B<sub>b</sub> B<sub>b</sub> B<sub>b</sub> B<sub>b</sub> B<sub>b</sub> B<sub>b</sub> B<sub>b</sub> B<sub>b</sub>

*f*

52 **6**

D D D D E E E E

*ff* *cresc.*

60 **D**

F F F F F F F F

*ff*

64

E E E E

*ff*

68 **E**

Musical staff for measure 68 in bass clef with a flat key signature. It contains a half note E2, a half note E2, and a half note E2, all beamed together. Above the notes are fingerings: '1' above the first and third notes, and '1' above the second note.

F

E<sub>b</sub>

76 **F** Much Slower (♩=60) **8**

Musical staff for measure 76 in bass clef with a flat key signature. The staff is mostly empty, with a thick black bar across it. At the end of the staff, there is a double bar line followed by a key signature change to two sharps (F# and C#).

84 **G** **9**

Musical staff for measure 84 in bass clef with a key signature of two sharps (F# and C#). The staff is mostly empty, with a thick black bar across it.

93

Musical staff for measure 93 in bass clef with a key signature of two sharps (F# and C#). It contains a half note D2, a half note D2, a half note D2, a half note D2, and a half note D2, all beamed together. Above the notes are fingerings: '4' above each note. The staff continues with a whole rest, a half note D2, and a quarter note G2.

D  
*p*

*pp*