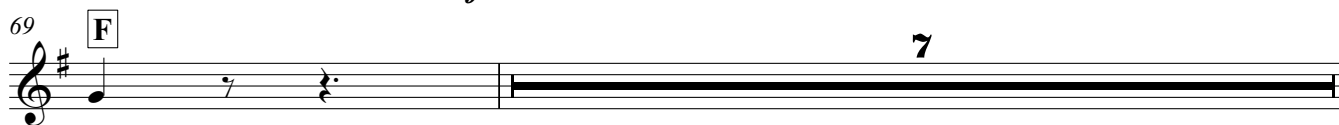
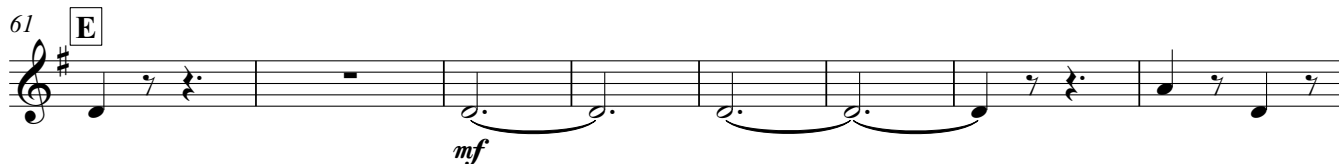
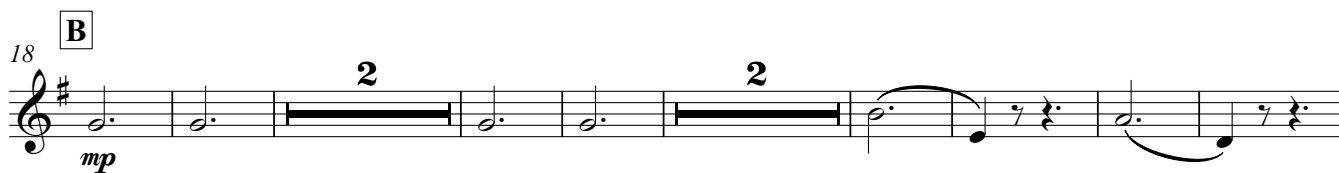
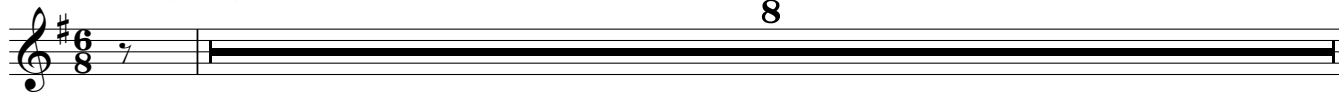


# Mozart Concerto no.4 Finale

MOZART,  
arr. Andrew J Smith

Brisk (♩. = 96)

8



85 **H**

*mp* **2** *mf*

Measure 85: Treble clef, key signature of one sharp (F#). The staff contains a half note C5, followed by a dotted quarter note G4, a dotted quarter note F#4, a whole note E4, and a whole note D4. A brace underlines the final two notes (E4 and D4), with a *mf* dynamic marking below.

93

*f*

Measure 93: Treble clef, key signature of one sharp (F#). The staff contains a dotted half note C5, followed by a dotted quarter note G4, a dotted quarter note F#4, a dotted quarter note E4, and a dotted quarter note D4. The final two notes (E4 and D4) are beamed together and marked *f*.

101 **I**

*mp* *mf* *f*

Measure 101: Treble clef, key signature of one sharp (F#). The staff contains a dotted half note C5, followed by a dotted quarter note G4, a dotted quarter note F#4, a dotted quarter note E4, and a dotted quarter note D4. The final two notes (E4 and D4) are beamed together and marked *f*. There are also *mp* and *mf* markings in the previous measures.

110

*mf* *p* *f*

Measure 110: Treble clef, key signature of one sharp (F#). The staff contains a dotted half note C5, followed by a dotted quarter note G4, a dotted quarter note F#4, a dotted quarter note E4, and a dotted quarter note D4. The final two notes (E4 and D4) are beamed together and marked *f*. There are also *mf* and *p* markings in the previous measures.

120 **J**

Measure 120: Treble clef, key signature of one sharp (F#). The staff contains a dotted half note C5, followed by a dotted quarter note G4, a dotted quarter note F#4, a dotted quarter note E4, and a dotted quarter note D4.

127

Measure 127: Treble clef, key signature of one sharp (F#). The staff contains a dotted half note C5, followed by a dotted quarter note G4, a dotted quarter note F#4, a dotted quarter note E4, and a dotted quarter note D4.

134

*ff*

Measure 134: Treble clef, key signature of one sharp (F#). The staff contains a dotted half note C5, followed by a dotted quarter note G4, a dotted quarter note F#4, a dotted quarter note E4, and a dotted quarter note D4. The final note (D4) is marked *ff*.

139 **K**

**7**

Measure 139: Treble clef, key signature of one sharp (F#). The staff contains a dotted half note C5, followed by a dotted quarter note G4, a dotted quarter note F#4, a dotted quarter note E4, and a dotted quarter note D4. A thick black line is drawn across the staff for the remainder of the measure, indicating a rest.

146

*mf* *ff*

Measure 146: Treble clef, key signature of one sharp (F#). The staff contains a dotted half note C5, followed by a dotted quarter note G4, a dotted quarter note F#4, a dotted quarter note E4, and a dotted quarter note D4. The final two notes (E4 and D4) are beamed together and marked *ff*. There is also an *mf* marking in the first measure.