

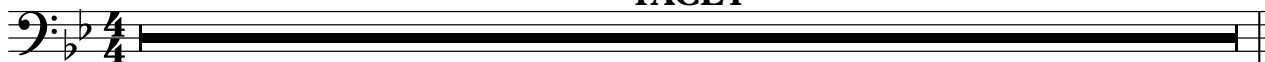
Tubas (Grade 4/5)

# Enigma Variations - Theme

Edward Elgar  
arr. Iain Farrington

Andante (♩ = c.63)

TACET



## Variation 6 - Ysobel

Andantino (♩ = c.52)

The musical score for Variation 6 - Ysobel is written in bass clef with a 3/4 time signature. It consists of three staves of music. The first staff begins with a double bar line and a fermata, followed by a measure with a half note and a quarter note, marked with a piano (*p*) dynamic. A boxed letter 'A' is placed above the staff. The second staff starts at measure 8, with a double bar line and a fermata, followed by two measures with half notes, marked with a piano (*p*) dynamic. Boxed letters 'B' and 'C' are placed above the staff. The third staff starts at measure 15, with a double bar line and a fermata, followed by a series of eighth notes, marked with a piano (*p*) dynamic. A boxed letter 'C' is placed above the staff. The piece concludes with a ritardando (*rit.*) marking and a final note with a fermata.

# Variation 7 (Troyte)

Lively (♩ = c.132)

6

13 **A**

19 **B** *ff*

26 **C**

30

3

*ff*

Detailed description of the musical score: The score is written for a tuba in bass clef with a 4/4 time signature. It begins with a tempo marking 'Lively (♩ = c.132)'. The first staff (measures 1-5) features a sequence of notes with dynamics *p* and *f*. The second staff (measures 6-12) includes a double bar line with a '2' above it, indicating a two-measure rest. The third staff (measures 13-18) is marked with a box 'A' and contains sixteenth-note patterns with a *ff* dynamic. The fourth staff (measures 19-25) is marked with a box 'B' and features a sequence of notes with dynamics *f* and *p*. The fifth staff (measures 26-29) is marked with a box 'C' and contains notes with dynamics *f* and *p*. The sixth staff (measures 30-31) includes a double bar line with a '3' above it, indicating a three-measure rest. The final staff (measures 32-33) concludes with notes and a *ff* dynamic.

# Variation 11 (G.R.S.)

Allegro (♩ = c.132)

3

10

15

29

34

**A**

**B**

**C**

**D**

*f*

*f*

8

2

3