



Interim Environmental Report 2004/05

BBC CORPORATE SOCIAL RESPONSIBILITY CENTRE



Welcome

Welcome to the BBC's Interim Environment Report for 2004/05. Last year we published a comprehensive account of the BBC's environmental activities and performance throughout our buildings, estates and operations. At the same time we widened our reporting to include sustainability and CSR (Corporate Social Responsibility) impacts as well as offering a wider view of how the BBC's output can make a contribution to these issues. Further details are available on the BBC website:

- bbc.co.uk/info/csr
- bbc.co.uk/info/environment

In this report we bring you a brief update on some of our recent activities together with data on our recent performance and our progress against environmental targets.

We are in the midst of making complex changes to the way the BBC operates to help deliver savings we need to invest in the digital future. This process has inevitably put pressure on everyone who works here. But what this review highlights is the undiminished commitment of our staff to improving our environmental impacts by challenging every aspect of the way we make programmes and content.

This interim report, together with the CSR Report for 2005, reflects what is already being done. Our challenge is to use the opportunities of new technologies and a more creative, open BBC to build on this work over the years ahead.

Jenny Abramsky

Director of Radio and Music
& BBC Environmental Champion



Contents

- 2** Introduction
- 3** Environmental Policy Statements
- 4** Creating Breathing Space
- 5** Climate Change Reporting
- 6** Environmental Performance
- 7** Data Overview

We welcome your feedback and comments – please use the website feedback page on bbc.co.uk/info/environment.

Environmental Policy Statements

The BBC has established a framework of Environmental Policies for managing its environmental and sustainability responsibilities and impacts. The Environmental Policy Objectives address corporate environmental and sustainability impacts and the Statement for Environmental Management Policy covers compliance issues falling under the BBC's operational management systems.

BBC ENVIRONMENTAL POLICY OBJECTIVES

The BBC is committed to achieving its objectives, purposes and values in an environmentally sound and sustainable manner. It aims to minimise any adverse impact on the environment from its activities and to continuously improve its environmental performance.

The BBC aims to establish best practices in the following areas:

Energy. We will minimise energy consumption and associated greenhouse gas emissions by improving our energy efficiency in line with business needs. We will investigate the use of alternative and renewable energy sources.

Discharges and emissions. We will reduce harmful emissions from our buildings and activities, aiming to out-perform existing statutory requirements.

Waste. We will promote waste reduction, re-use and recovery. We will monitor waste-disposal arrangements to ensure continuing safe disposal.

Transport. We will implement environmentally friendly transport plans, addressing commuting and business travel, aimed at contributing to the reduction in road congestion and pollution.

Sustainable Buildings. We

will improve our working environments, offices and workplaces to provide comfortable, healthy, efficient and sustainable buildings.

Supply Chain. Through the BBC's Purchasing Policy, we will influence suppliers of services and resources to adopt best environmental practices. The BBC commit to procure goods from sustainable sources and specifically to increase the proportion of timber and paper products obtained from certified, well-managed forests and through recycling.

Environment and the community. We will continue to demonstrate our responsibility as a good neighbour and actively contribute to the quality of community life. We will support and sponsor environmental initiatives in the local community.

Continuous improvement. We will monitor our progress through performance indicators and set specific improvement targets. Details of our progress will be published in an open and transparent manner in an annual Environmental Performance Report.

Promote awareness. We will promote a culture of environmental awareness across the BBC, so that it becomes embedded as good practice.

STATEMENT OF ENVIRONMENTAL MANAGEMENT POLICY

The BBC exists to enrich people's lives with great programmes and services that inform, educate and entertain. Our vision is to be the most creative and trusted organisation in the world.

Environmental management is integral to this vision and our performance. Our overall objective is to carry our operations in a way which manages and minimises any adverse environmental impact and demonstrates pollution prevention.

We will achieve this by:

- continual and effective improvement of environmental performance
- compliance, as a minimum, with all applicable legislation, BBC requirements and any other adopted requirements which relate to our environmental aspects
- implementation and continued improvement of an occupational risk management system that meets the requirements of the International Standards Organisation, ISO 14001:2004
- the setting and review of environmental objectives and targets
- review of the management system and policy to ensure their suitability, adequacy and effectiveness
- provision of suitable and sufficient environmental

information, instruction and training to enable all staff to carry out their jobs competently

- selection and monitoring of competent third parties to ensure appropriate standards of environmental management are achieved
- effective communication and cooperation with third parties so that they are aware of our environmental management expectations

Environmental management is everyone's responsibility, and a prime responsibility of all levels of management, and I expect everyone to contribute to achieving our overall objective. We will provide adequate and appropriate resources to implement this policy and will ensure it is properly communicated and understood.

My aim, and those of the Executive, is to encourage initiative and adopt best practice in a culture where employees and managers are aware of their individual responsibilities for the environment and actively engaged and committed to improving standards of environmental management.

Mark Thompson
 Director-General
 Authorised April, 2005
 Next review 2006



Creating Breathing Space

Springwatch was broadcast in 2005 on BBC Two, showing the advance of spring using sightings and wildlife from around the UK and focusing on iconic spring species, including courting grebes, boxing hares and spawning toads.

But it was more than a one-off conservation programme. It has sparked a series of mass audience participation activities around the conservation of landscape and wildlife. And under the wider multi-media campaign Breathing Space, the long term goal is to mobilise a million people to significantly increase the UK's wildlife-friendly green spaces and heighten awareness and understanding of nature – literally create breathing spaces for people and wildlife.

To engage this amount of people requires a sustained, cross-platform approach – joined up messages across tv, radio and the internet. Through the *Springwatch* Survey 2005 on bbc.co.uk, audiences could directly participate in a national mapping survey and access further information and message boards. The survey itself showed that climate change factors were already influencing the UK:

- bumblebees and butterflies were being seen three weeks earlier than 30 years ago
- hawthorn bushes flowered about two and a half weeks earlier than they did 30 years ago
- swifts arrived about a week earlier this year than in recent warm years
- one species of bumblebee is raising an extra generation due to milder winters.



Down among the daffs: *Springwatch* presenter Bill Oddie gives a call to action.

'When I grew up, the countryside was never far away – there were always green oases in even the busiest city. These days our civic parks and gardens are being closed and inner city trees cut down to save money. Children grow up with nowhere to run around - without knowing a butterfly from a badger. We've got to make space for our kids to breathe'

Alan Titchmarsh

There were also a range of associated programmes, including *Spring Trilogy*, *Birdsong Guide*, *Living World* and a *Woman's Hour* special on how weather affects wildlife, all on Radio 4. The BBC's *Video Nation* scheme allowed people to contribute by producing their own 'breathing space' video which can be viewed on the *Video Nation* website. On the ground, these activities were supported by a range of partner organisations – from wildlife trusts to local authorities, the Big Lottery Fund to local businesses.

The Breathing Space campaign will continue into 2006 with *Autumnwatch* and other programmes including *Dirty Weekend* (BBC One 2007), *Nature of Britain* (BBC One 2007) and *Greatest Garden* (BBC One and Two, 2008). Further audience engagement initiatives will be developed around climate change in early 2006 and an international conservation fund raising campaign in 2007.

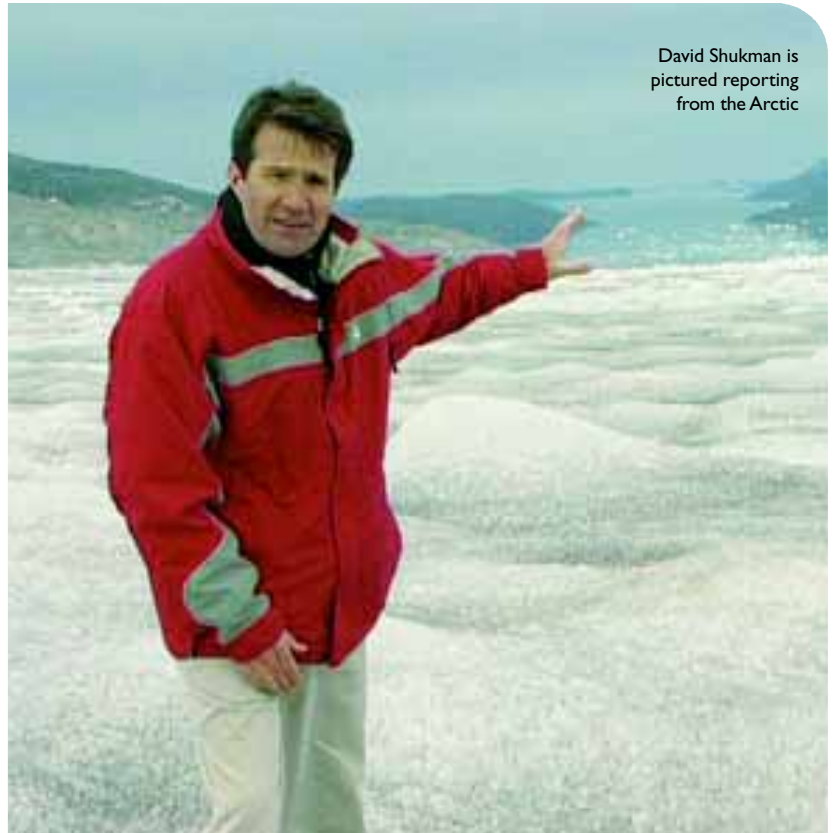
Climate Change Reporting

by **David Shukman, environment and science correspondent, BBC News**

Environmentalists sometimes accuse us of not taking climate change seriously enough while sceptics say we accept the warnings of global warming too unquestioningly. Both views can seem rather unfair when you're in the teeth of a howling gale on the Greenland ice-sheet trying to report on the latest findings of a team of NASA scientists.

To my knowledge no other news organisation has devoted anything like the same effort to grappling with the frontline realities of climate change science. From a research plane recording the melting of the Antarctic ice to a mountaintop post in Hawaii monitoring the rise in greenhouse gases, I have encountered the same relieved response from scientists: 'Thank you for bothering – nobody else does.'

In my own experience, BBC News is prepared to dig deep to bring viewers closer to the climate change story. In July 2004, BBC News24 commissioned reports from as far afield as Alaska and the Gobi desert as part of a special Global Warning week. In the same way, the *Ten O'Clock News* has now agreed to send me to the farthest corners of the planet to report on the latest research. And this is part of a pattern. Numbers never tell you the whole story but an internal study in June 2005 found that over the previous year many BBC programmes were now covering climate change twice as often.



David Shukman is pictured reporting from the Arctic

From *Look North* to *Jeremy Vine* to the BBC news website, editors are clearly sensing the subject's growing importance. When new data revealed that the Arctic ice was vanishing at an accelerating rate, the *Ten O'Clock News* chose it to lead that night's bulletin. But the recognition stretches more broadly as well: the fact that programmes like *Springwatch*, *Blue Peter*, *Working Lunch* and *Gardener's World* have also covered climate change illustrates how it touches all our lives.

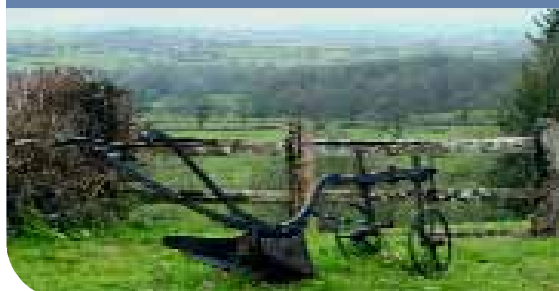
Are we doing enough? No one in my shoes would ever think so. Like with any long-running story, hooks and bursts of activity are needed to catch an editor's eye and all of us regularly engaged on this topic would like to see more of it on air.

We have to tread carefully though. Catastrophic events like Hurricane Katrina can be all too readily blamed on global warming and then our task is to explain what the science can answer and what it cannot.

Whatever the verdict, climate change is moving up the agenda and for many of us there are busy times ahead.

Growing coverage of climate change

MEDIA	2004-5	2003-4
News & Current Affairs	168 items	71 items
Children's	7 items	5 items
Radio	96 items	68 items
Online news	292 items	123 items



Environmental Performance

These charts summarise progress on key BBC performance indicators.

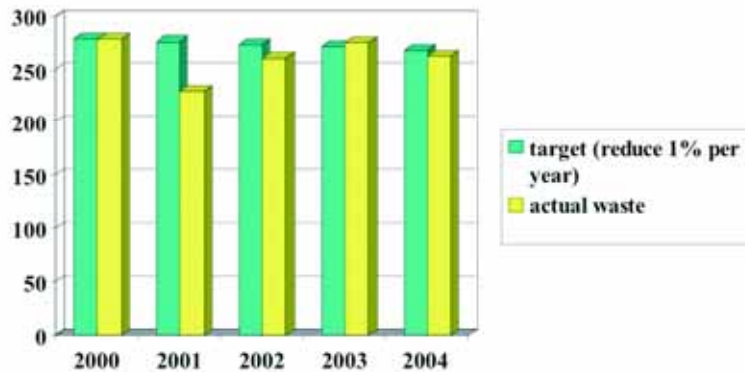
The waste indicators show real improvement in terms of increasing the proportions of recycled waste (to just below an ambitious target) and reducing total waste produced (exceeding the target).

Total CO₂ emissions reduced significantly in 2004 – reflecting approximately 95% of all electricity used at the BBC being sourced from Climate Change Levy exempt sources such as hydroelectric power stations, wind farms and gas from landfill sites.

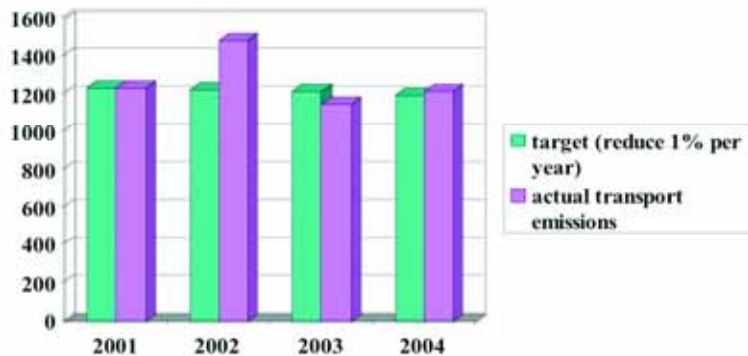
Transport CO₂ emissions increased over 2004, reflecting international priorities. Measures have been introduced to increase efficiency of vehicles and travel which should result in a decrease over the longer term.

Full information is at bbc.co.uk/info/environment

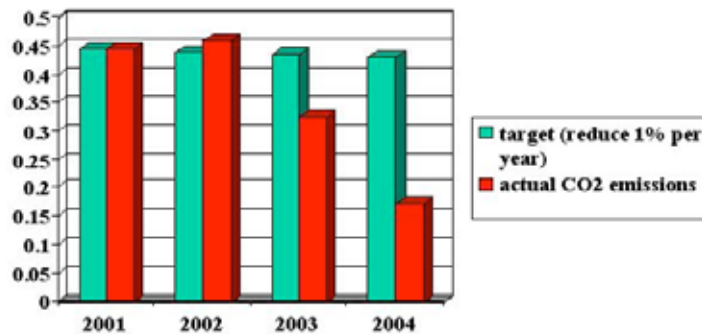
Total waste (kg per person)



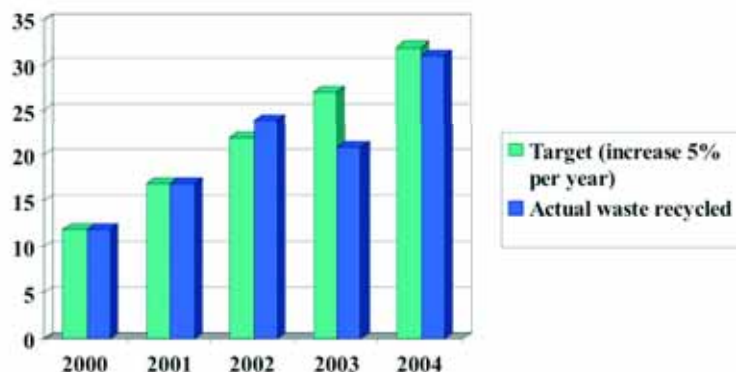
Transport CO₂ emissions (kg per person)



Overall CO₂ emissions (tonnes per broadcast hour)



Waste recycled (as % of total)



Data Overview

Gathering and communicating environmental data and setting targets is part of the BBC's key commitment to transparent and open reporting. This reporting period applies to January – December 2004.

Measuring progress on Waste

Indicator	2000	2001	2002	2003	2004	Progress	Future Targets
Total waste – kg per person (1)	279	230	261	275	262	2004 target of 268 kg per person was achieved.	Reduce by 1% per year from 2000 baseline. 2005 target is 265 kg per person.
Waste recycled as % of total (2)	12%	17%	24%	21%	31%	2004 target of 32% was not achieved, but a significant improvement was made.	Increase recycling by 5% per year (up to 75%). 2005 target is 37%.
Total waste to Landfill (tonnes) (3)	5,924	4,880	5,491	6,221	4,763(4)		

(1) Number of staff does not include casual, freelancers, service or agency staff.

(2) Waste recycled figures include office & catering recycling schemes.

(3) Waste to landfill excludes special waste, construction waste – including building refurbishment, and waste from small sites (less than five occupants).

(4) Waste data for 2004 is based on estimates provided by BBC service partners and covers >75% of the estate.

Measuring progress on Transport

Indicator	2001	2002	2003	2004	Progress	Future Targets
Transport CO2 emissions per person (1) (2)	1,232kg	1,487kg	1,150kg	1,210kg	Target of 1195 kg per person was not achieved, but initiatives for 'green' fuels are in place.	Reduce by 1% per year from a baseline of 2001. 2005 target is 1183 kg per person

(1) Number of Staff does not include casual, freelancers, service or agency staff.

(2) Based on transport services booking information – excludes company cars, couriers and Outside Broadcast fleet.

Measuring progress on Energy and Water

Indicator	2000	2001	2002	2003	2004	Progress	Future Targets
Estimated total water-use – m3 per person (2)	21.6	23.4	30.4	24.0	32.6 (1)	Target to improve estimates by collecting data from 75% of estate was not achieved. Data presently only relates to London.	Collect water-usage data covering >75% of BBC estate by 2006.
Total building energy GWh	385	425	490	466	418 (1)		Develop new indicator, data and target based on building energy use per m2

(1) Energy and water data for 2004 is based on estimates provided by BBC contractors.

(2) Number of staff does not include casual, freelancers, service or agency staff.

Measuring progress on Climate Change

Indicator	2001	2002	2003	2004	Progress	Future Targets
Total CO2 emissions – tonnes per broadcast hour (1)	0.444	0.460	0.326(4)	0.174	2004 target of 0.431 was significantly exceeded – reflecting the high proportion of electricity purchased from renewable sources	1% reduction year on year – from baseline of 2001. 2005 target is 0.426 tonnes CO2 per broadcast hour
Building CO2 - tonnes	122,959	132,821	96,171(4)	39,529(3)	Large reduction in 2004 data reflects the high proportion (95%) of electricity purchased from renewable sources (Climate Change Levy Exempt).	
Transport CO2 – tonnes (2)	29,652	41,109	32,948	29,120		

(1) Calculated according to UK Government guidelines.

(2) Based on transport services booking information – excludes cars, couriers and Outside Broadcast fleet.

(3) Emission data for buildings for 2004 is based on estimates provided by BBC contractors

(4) 2003 emission data re-stated from last year following a review of data

For Supply Chain

New measurements and data are being developed to address the BBC's key supply chain impacts. The performance indicators being developed are:

- i) Percentage (%) of BBC timber products obtained from sustainable/ recycled sources
- ii) Number of BBC buildings where Facilities Management have introduced 'Environmental Management Systems' (EMS) which are certified to ISO 14001 or equivalent.

Number of staff and broadcast hours

Year	No. of Staff	No. of broadcast hours	Source
2000 (2000/01 financial year)	24,129	337,612	2000/01 Annual Report & Accounts
2001 (2000/01 financial year)	25,568	343,865	2001/02 Annual Report & Accounts
2002 (2000/01 financial year)	27,685	378,110	2002/03 Annual Report & Accounts
2003 (2000/01 financial year)	28,636	396,430	2003/04 Annual Report & Accounts
2004 (2000/01 financial year)	27,264	395,125	2004/05 Annual Report & Accounts

Building Assessments

Place	Area (m2)	BREEAM rating at design stage	Date	BREEAM rating on completion	Date
BBC White City Media Village, Media Centre	37,160	Excellent (BREEAM 98 for offices)	2002	Excellent (BREEAM 98)	2003
BBC White City Media Village, Broadcast Centre	39,018	Excellent (BREEAM 98 for offices)	2002	Excellent (BREEAM 98)	2003
BBC White City Media Village, The Green Room	8,163	Excellent (BREEAM 98 for offices)	2002	Excellent (BREEAM 98)	2003
BBC Broadcasting House development, London	80,000	Excellent (bespoke assessment based on BREEAM 2002 for offices)	2004	Under construction	