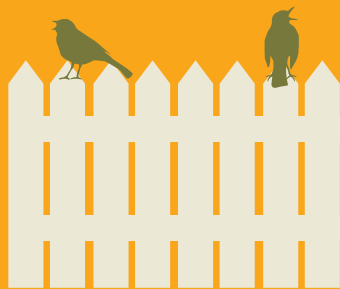


Garden

bingo



Go on safari in your garden and see what you can find!



Grey squirrel – Common across the country, and likely to be seen raiding your bird table – a good reason to build a special feeding station for birds.



Ivy – One of the most important plants for wildlife in any garden. Ivy offers great shelter and a vital end-of-season fuel stop.



Cardinal beetle – Spectacular, bright red beetle with comb-like antennae. Seen all over the country from May to July. Look out for them on tree bark.



Chaffinch – A colourful finch that loves a mixture of habitats and food. This flexibility has made it one of the UK's most successful garden species.



Natterjack toad – Very rare, but you might be lucky if you live near the coast. Has a rough, warty skin with a prominent yellow stripe down its back.



Peacock butterfly – Look out for these fabulous butterflies feeding on buddleia in midsummer.

Seen

Seen

Seen

Bingo!