

Mammal
food

bingo



You may not be able to spot all these mammals in your local area, but you can try finding the different types of food they eat.



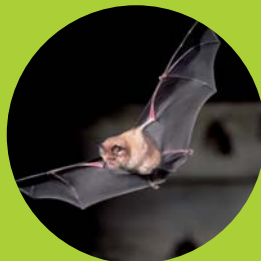
Common shrew – Very small with a long, pointed nose. Often difficult to spot because it lives in dense vegetation. Loves slugs, snails, grubs and worms.

● Seen



Hare – Its powerful hind legs mean it can sprint at up to 45mph. Grazes on the young shoots of grasses and herbs.

● Seen



Horseshoe bat – Distinguished by a broad, u-shaped piece of skin around the nostrils. It eats flying insects, mainly caught mid-air.

● Seen



Otter – Its webbed feet, with five digits on each foot, leave distinctive footprints. Otters live in holts and eat eels, crayfish, other fish, birds and small mammals.

● Seen



Pine marten – Feeds on birds, squirrels, rabbits, eggs, beetles, berries and honey. Also loves peanut butter! Lives mainly in Scotland, with some presence in England and Wales.

● Seen



Red squirrel – Increasingly rare, the red squirrel enjoys seeds, nuts, shoots, fungi and even insects. It lives in a tree-top drey.

● Bingo!